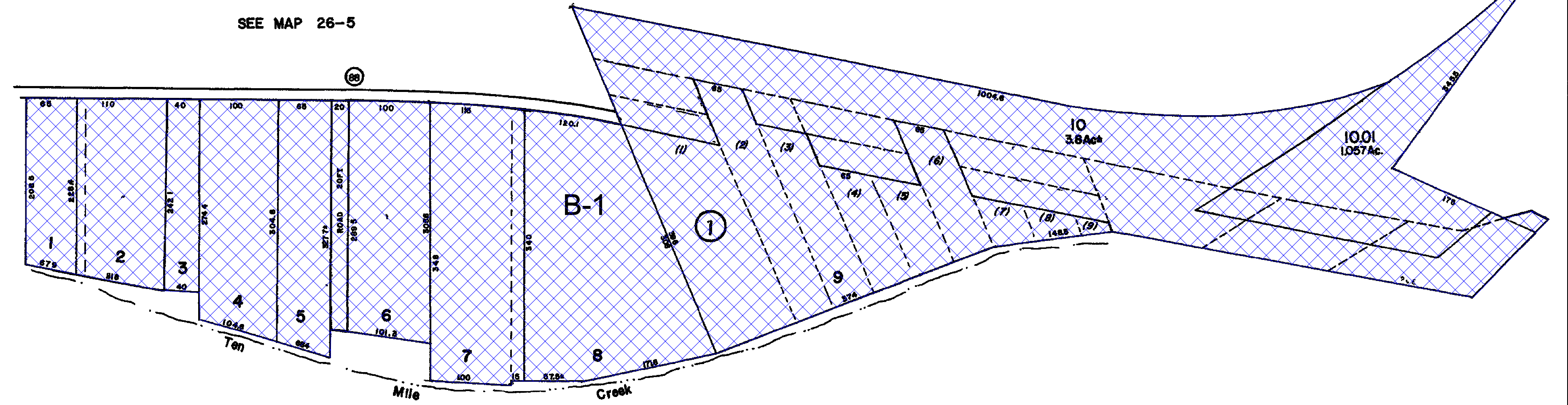


SEE MAP 26-5



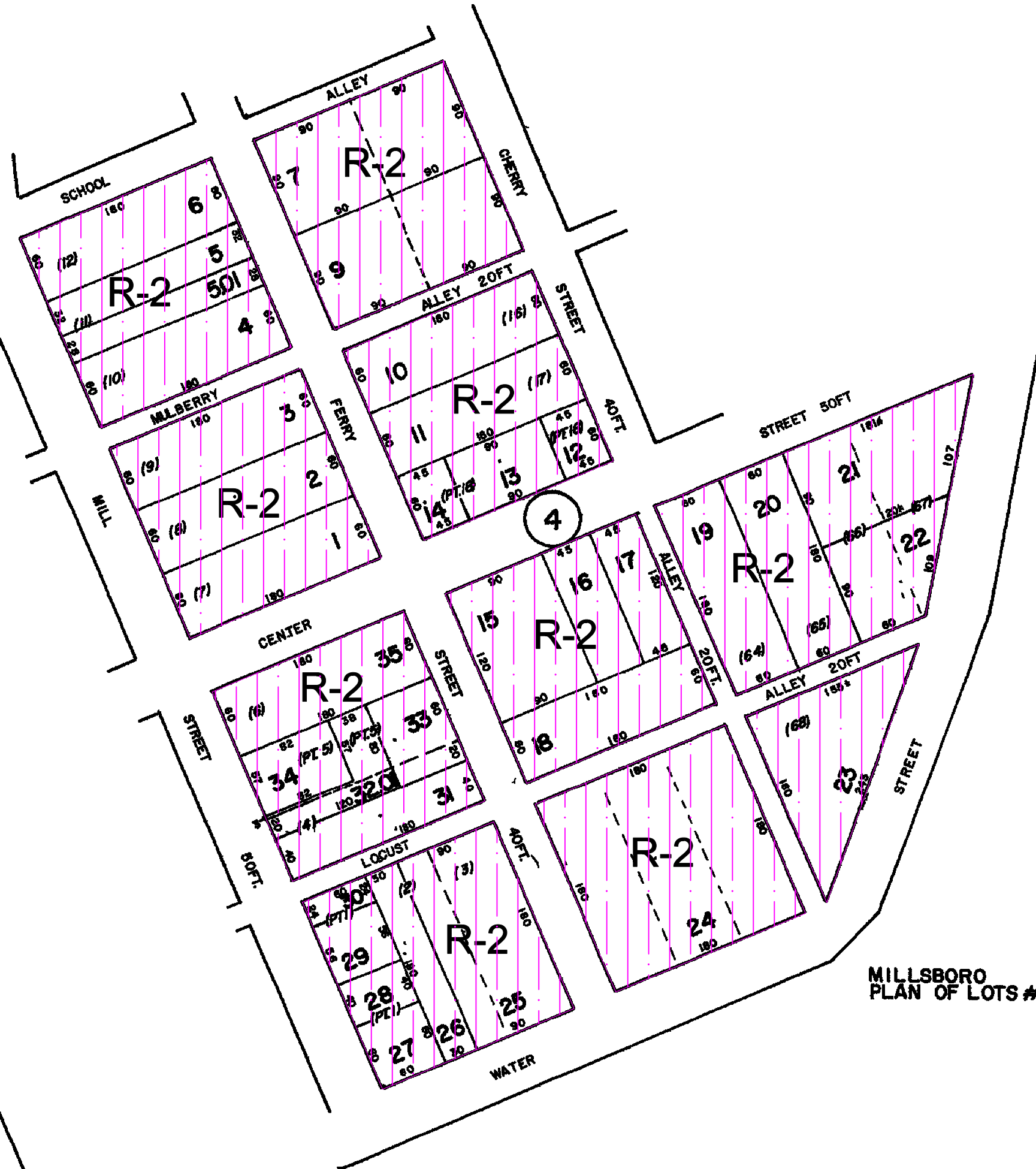
SEE MAP 26-5

SEE MAP 26-7

SEE MAP 26-5



MILLSBORO PLAN OF LOTS #1



MILLSBORO PLAN OF LOTS #2

SEE MAP 26-5

NOTICE

This map has been prepared, as required by law, for Tax Assessment purposes ONLY. It has been compiled from records in the office of the Recorder of Deeds, the office of the Board of Assessment and Revision of Taxes, the office of collaborating engineers, and, in some cases, from information gathered by field work.

The Washington County Board of Assessment and Revision of Taxes

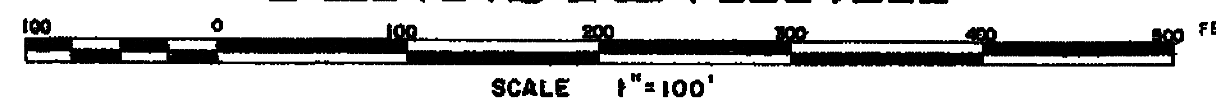
LEGEND

- STATE-COUNTY LINE
- BORO-TOWNSHIP LINE
- WARD LINE
- PROPERTY LINE
- DIMENSIONS (Dead) (Scaled) 1/2" = 112' ±
- AREA (Dead) (Calculated) 1/4" = 17Ac ±
- ORIGINAL LOT LINE & NO
- LAND HOOK & ROAD R/W
- RAILROAD R/W
- WATER
- BLOCK NO
- PARCEL NO

CHURCH ☩ SCHOOL ☩ CEMETERY †

REAL PROPERTY MAP

EAST BETHLEHEM TOWNSHIP WASHINGTON COUNTY PENNSYLVANIA



CLT BALANCED GOVERNMENTAL SERVICES

Tox Mapping Division COLE LAYER TRUMBUE CO 3535 Selwyn Avenue Dayton, Ohio 45406

REVISIONS	BY	DATE
1		
2		
3		
4		
5		

COMPILED: 9-19-72 PHOTO: 12-279

MAP NO. 26-6