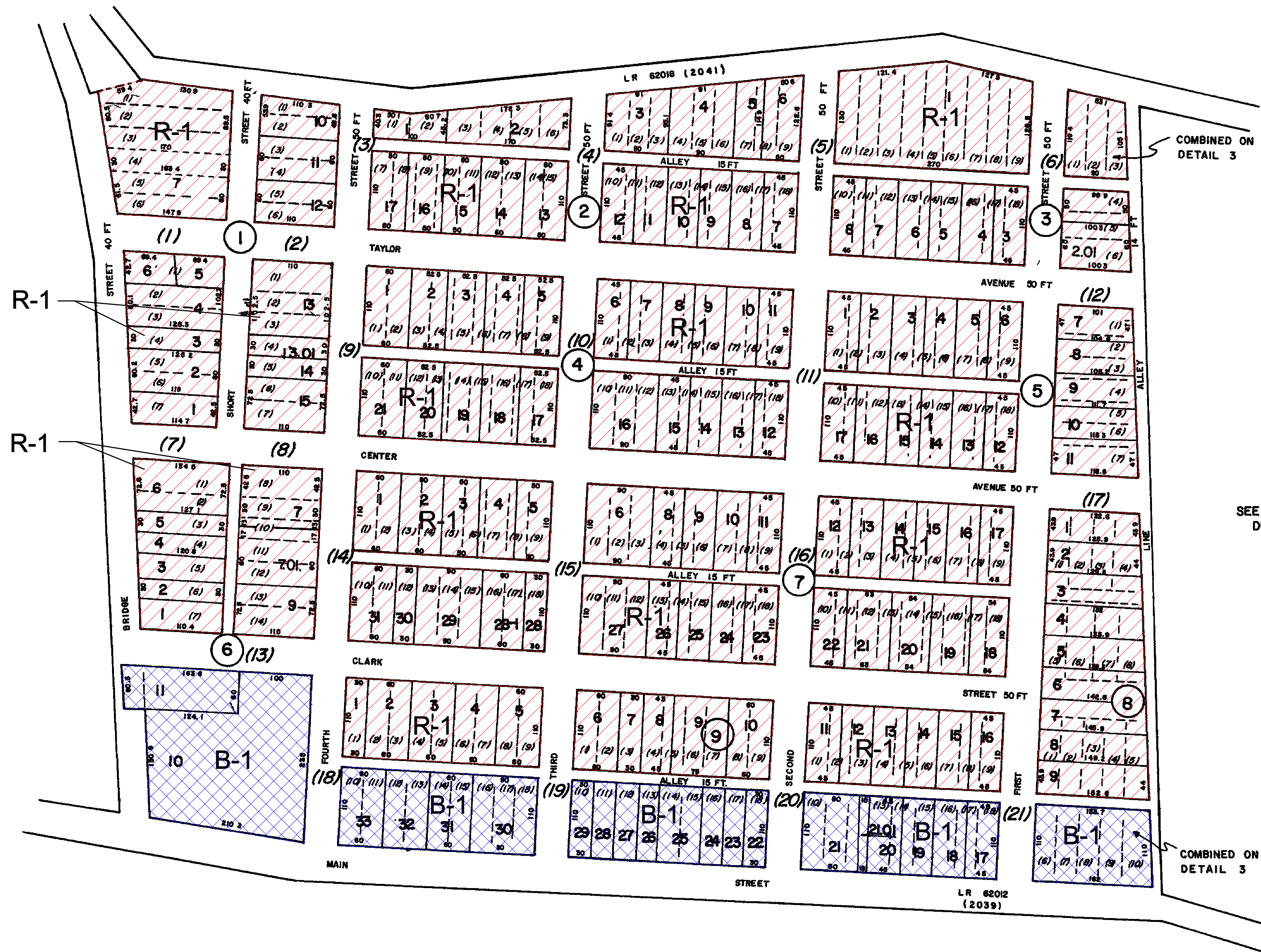


SEE MAP 26-4
DETAIL 1



WILLIAMSTOWN S/D
PB. 3 PG. 28

SEE MAP 26-4
DETAIL 3

NOTICE

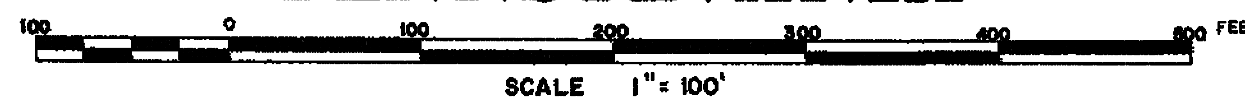
This map has been prepared, as required by law, for Tax Assessment purposes ONLY. It has been compiled from records in the office of the Recorder of Deeds, the office of the Board of Assessment and Revision of Taxes, the office of collaborating engineers, and, in some cases, from information gathered by field work.

The Washington County Board of
Assessment and Revision of Taxes

LEGEND

- STATE-COUNTY LINE -----
- BORO-TOWNSHIP LINE -----
- WARD LINE -----
- PROPERTY LINE -----
- DIMENSIONS (Deed) (Scaled) 1/2" = 1/2" ±
- AREA (Deed) (Calculated) 1/4" = 1/4" ±
- ORIGINAL LOT LINE & NO. ----- (100)
- LAND HOOK & ROAD R/W -----
- RAILROAD R/W -----
- WATER -----
- BLOCK NO. -----
- PARCEL NO. -----
- CHURCH ☩
- SCHOOL ☩
- CEMETERY †

REAL PROPERTY MAP
EAST BETHLEHEM TOWNSHIP
WASHINGTON COUNTY
PENNSYLVANIA



REVISIONS		BY	DATE
1	PARCEL 7-7 DELETED		
2			
3			
4			
5			

COMPILED: 9-19-72 PHOTO: 11-262

CLT
BALANCED
GOVERNMENTAL
SERVICES
Tax Mapping Division
COLE LAYER TRUMBULL CO
3335 Solon Avenue Dayton, Ohio 45406

MAP NO.
26-4
DETAIL 2