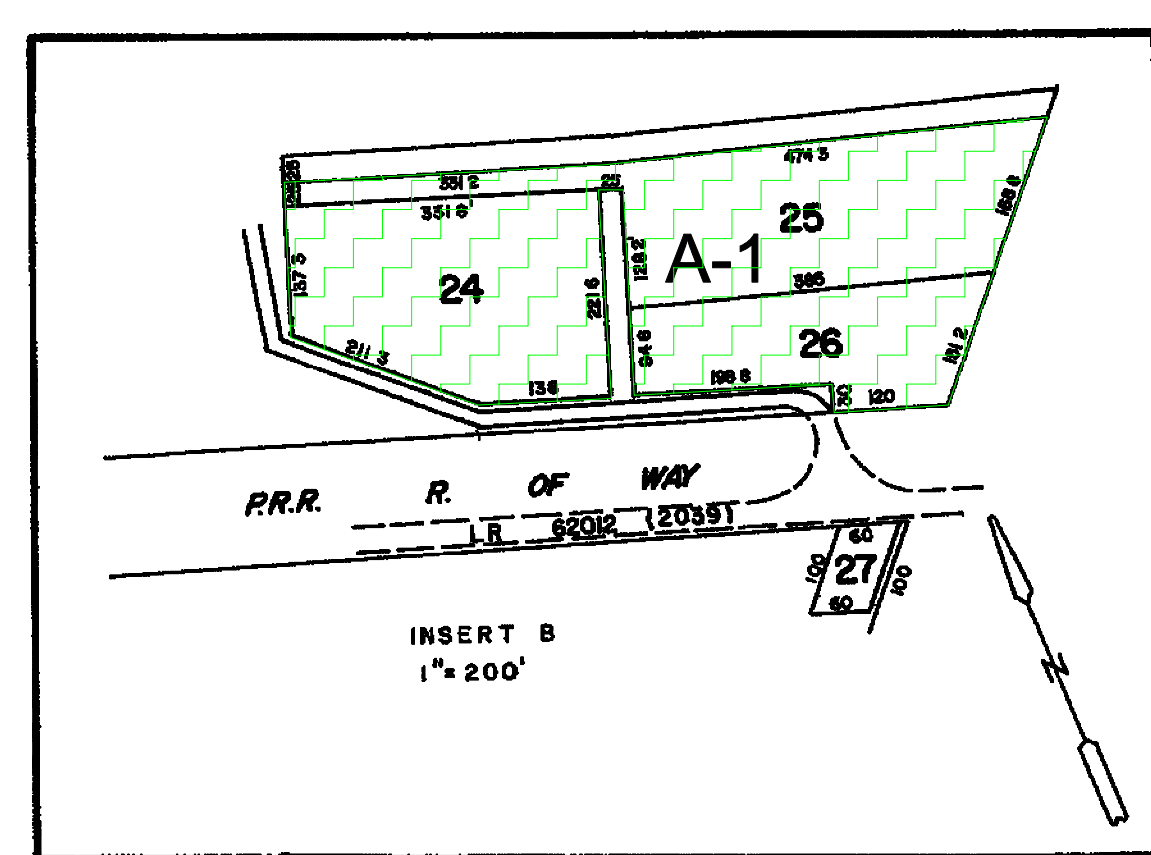
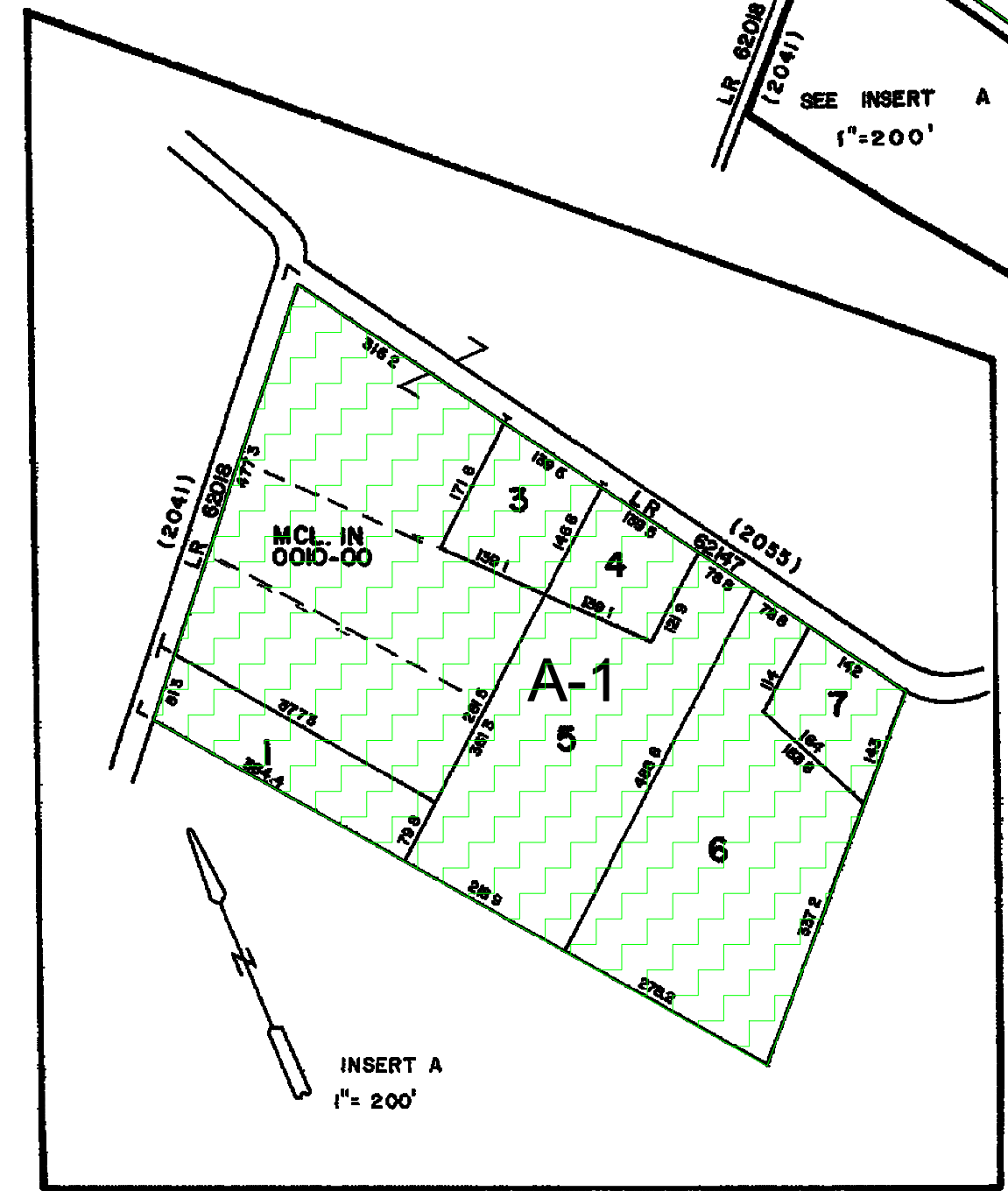
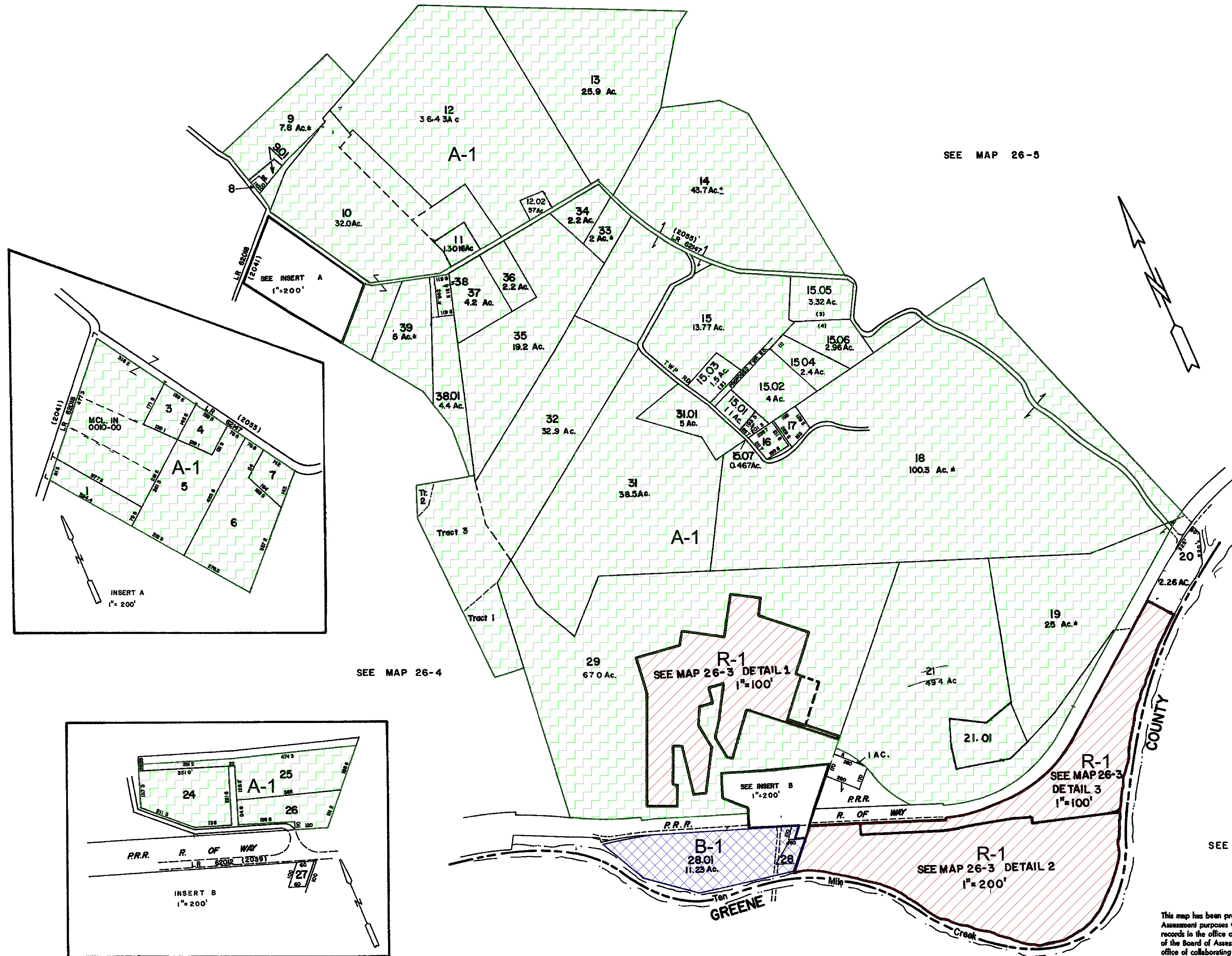


SEE MAP 26-2

SEE MAP 26-5



SEE MAP 26-4

SEE GREENE COUNTY

NOTICE

This map has been prepared, as required by law, for Tax Assessment purposes ONLY. It has been compiled from records in the office of the Recorder of Deeds, the office of the Board of Assessment and Revision of Taxes, the office of collaborating engineers, and, in some cases, from information gathered by field work.

The Washington County Board of Assessment and Revision of Taxes

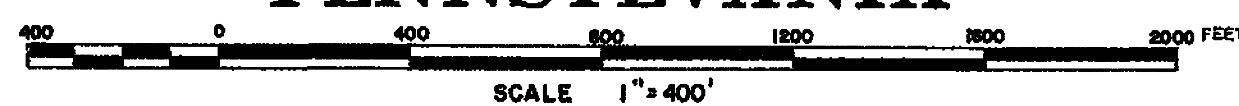
CLT
BALANCED
GOVERNMENTAL
SERVICES

Tax Mapping Division
COLE LAYER TRUMBUE CO
3535 Salem Avenue Dayton, Ohio 45406

LEGEND

STATE-COUNTY LINE	-----	ORIGINAL LOT LINE & NO	----- (100)
BORO-TOWNSHIP LINE	-----	LAND HOOK & ROAD R/W	-----
WARD LINE	-----	RAILROAD R/W	-----
PROPERTY LINE	-----	WATER	-----
DIMENSIONS (Deed) (Scaled) 1/2" & 1/4"	-----	BLOCK NO	-----
AREA (Deed) (Calculated) 1/4" & 1/8"	-----	PARCEL NO	-----
		CHURCH	+
		SCHOOL	+
		CEMETERY	+

REAL PROPERTY MAP
EAST BETHLEHEM TOWNSHIP
WASHINGTON COUNTY
PENNSYLVANIA



REVISIONS	BY	DATE
1		
2		
3		
4		
5		

COMPILED: 10-4-72 PHOTO: J1-268

MAP NO.
26-3